

**SOLID
TECHNICAL
SOLUTIONS™**

TEC-KOTE™ 700 SERIES

Multi-Purpose Protective Coating

DESCRIPTION:

Tec-Kote products leave a clear, durable, protective covering for painted or finely finished parts. Once applied and dried, this family of products forms a hard, scratch-resistant coating strong enough to resist stone chips, dirt, weather, common debris and corrosion encountered in transport and storage.

This family of products will moderately adhere to the finished surface in order to disengage, rather than transfer stress to the paint, when damage is encountered. Specially formulated for automotive finishes found on body panels, exterior components and accessories, Tec-Kote is recommended and can be used for any number of applications where water washing is part of the final operation.

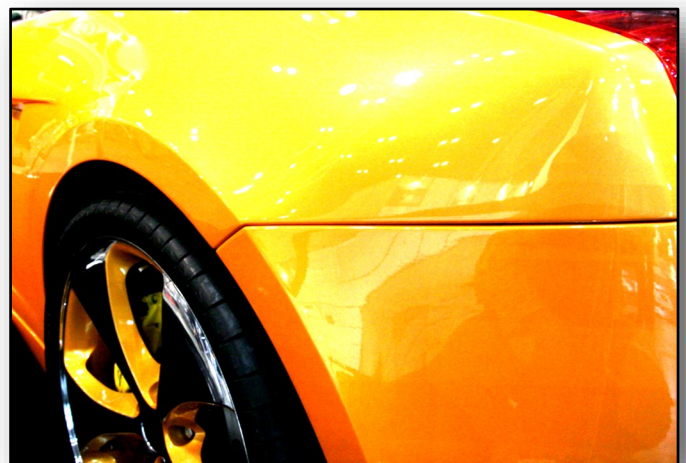
APPLICATION METHODS:

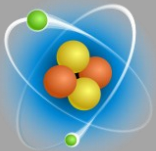
Tec-Kote is available in several grades for multiple methods of application, including:

- » **Atomized spray**
- » **Brush**
- » **Roll**
- » **Dip**

PRODUCT FEATURES:

- » **Versatile:** patented technology can be used on any size or type of part.
- » **Protective:** This clear, glossy, durable coating leaves surfaces scratch and mar resistant and prevents damage in a multitude of applications.
- » **Saves money:** this family of coatings can eliminate most or all of packaging and wrapping product.
- » **Simple:** Easily applied and simply removed formula.
- » **Environmentally friendly:** Safe, water-based formula.
- » **Customized:** Multiple grades are available for varied properties.





**SOLID
TECHNICAL
SOLUTIONS™**

TEC-KOTE™ 700 SERIES

Multi-Purpose Protective Coating

AVAILABLE GRADES:

GRADE:	750	751	752	753	754
Type	Soluble	Non-Soluble	Non-Soluble	Non-Soluble	Non-Soluble
Common Use	General	Transport	Long Storage	Equipment	Transport
Appearance	Clear Gloss	Clear Gloss	Clear Gloss	Clear Gloss	Opaque Ivory
Application	Spray	Industrial Spray	Industrial Spray	Roll	Industrial Spray
Corrosion Prevention	Low	Moderate	High	High	Low
UV Resistance	Moderate	High	High	High	High
Removal	Hot Water Wash	Wash With Additive	Wash With Additive	Pre-Treat Wash	Wash With Additive

Note: Additional grades are available and/or can be formulated to meet select requirements or standards.

SPECIFICATIONS:

Carrier Medium	Water
Viscosity	50-500 cPs
Liquid Appearance	Neutral or colorless, translucent
Dry Appearance	Clear, high gloss finish
Dry Texture	Hard, durable